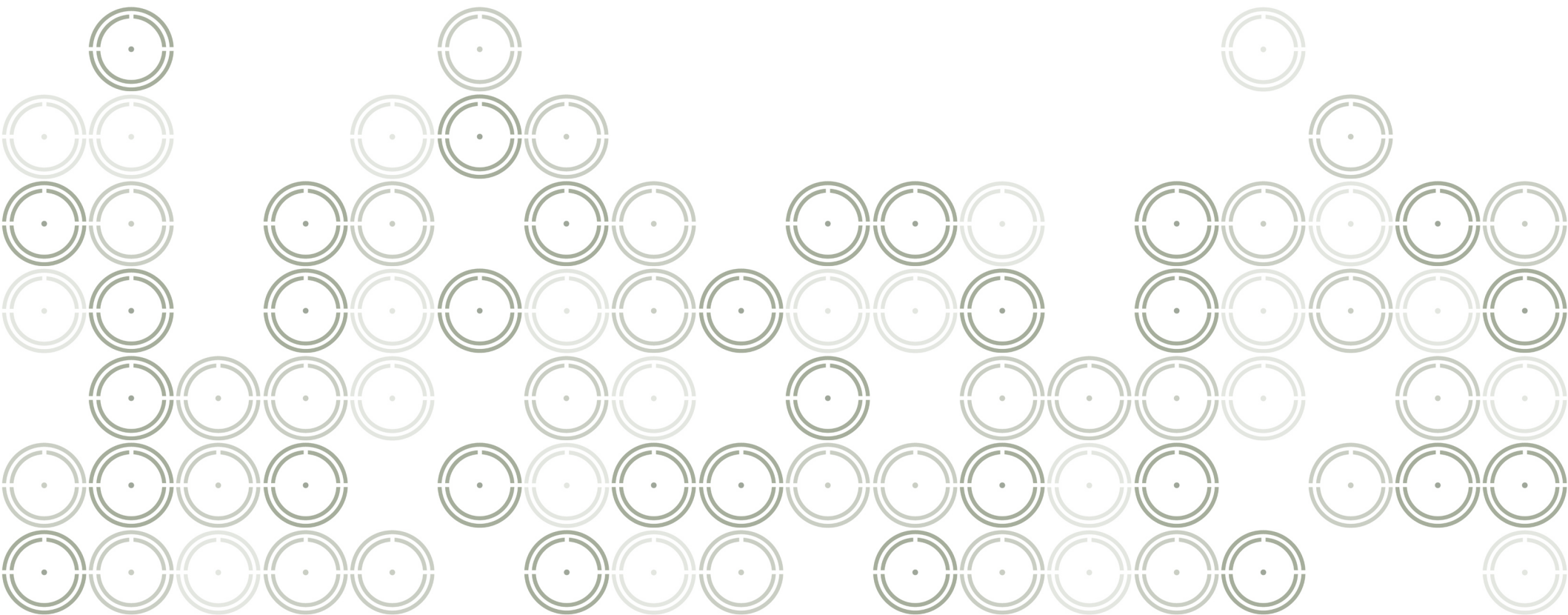
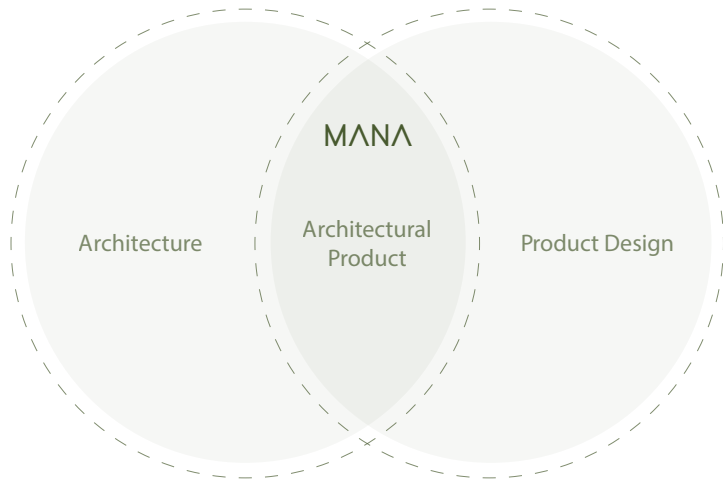


MANA

2023







# MANA About

Mana's field of activity is focused on prefabricated architectural products along with design, research, and construction in this field. The issue of prefabrication has attracted the attention and focus of many engineers, architects, and companies in developed countries due to prominent and important features such as cost reduction and reduced construction time. Today's world is witnessing examples and instantiations of successful and admirable structures based on this technology and construction method.

The obvious advantages and importance of this field of architectural technology led the Mana team to acquire their specialized knowledge and skills to overcome design challenges, implementation complexities, and engineering standards, and focus on the achievement of unique quality. Mana's current activities can be evaluated in the field of academic research by focusing on prefabricated structures and recycled materials, designing specialized and studied samples for mass production, overcoming engineering and executive challenges and issues, and striving to achieve a level of standard and international quality in this field.



Customer Service

Standard & Quality



Sustainability & Energy

Time Optimization



Prefabricated Process

Technological Advancement



Expandability

Economic Optimization



Mobility

Engineering Collection



# MANA Visions

Based on the contemporary concerns and challenges of the architecture and construction industry, Mana Group formed its long-term goals and vision to identify and fill the existing gaps by relying on the tradition of Iranian architecture along with modern technology and knowledge.

MANA goals can be defined with a general overview of the following:

- Climatic and indigenous perspective despite modernism
- Formal simplicity and minimal structure
- Integration of modern technology and indigenous architectural strategies
- Recycle based on the perspective of materials
- Reducing the weight of architectural structures
- Ability to reproduce and expandability over time
- Flexibility and uniqueness in design and construction
- Including a variety of functions in single structures
- Significant reduction in cost and construction time
- Creating architectural quality and innovative space while being prefabricated
- Redefining the construction process with a contemporary and progressive method
- Provide a new approach toward the audience and user experience
- Design and construction of details based on sustainable architectural concepts



Gheslaghs are prefabricated and pre-engineered residential units for humid and rainy areas.



Light Weight Structures (LWS) are light pre-engineered structures with variety of functions.



Mana container products include re-used structures of transportation containers.



White Tents are tensile structures designed and engineered with a contemporary and technical approach.



G

## Gheshlagh

Gheshlaghs are prefabricated and pre-engineered residential units with a noble approach to vernacular architecture of northern Iran. These residential units are designed and engineered considering the climate and weather conditions of humid and rainy areas.

Kooch - S	13
Kooch - M	19
Sai	25
Hive	31
V	37





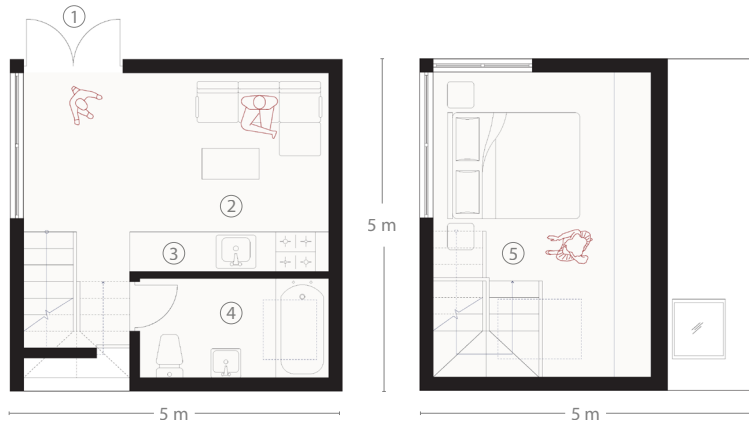


Kooch is a potential choice for challenging landscapes instantiating: Swamps, forests and unusual spaces in which the possibility of construction is limited and a flat deck (including suitable foundation) is the minimum requirement of this product.

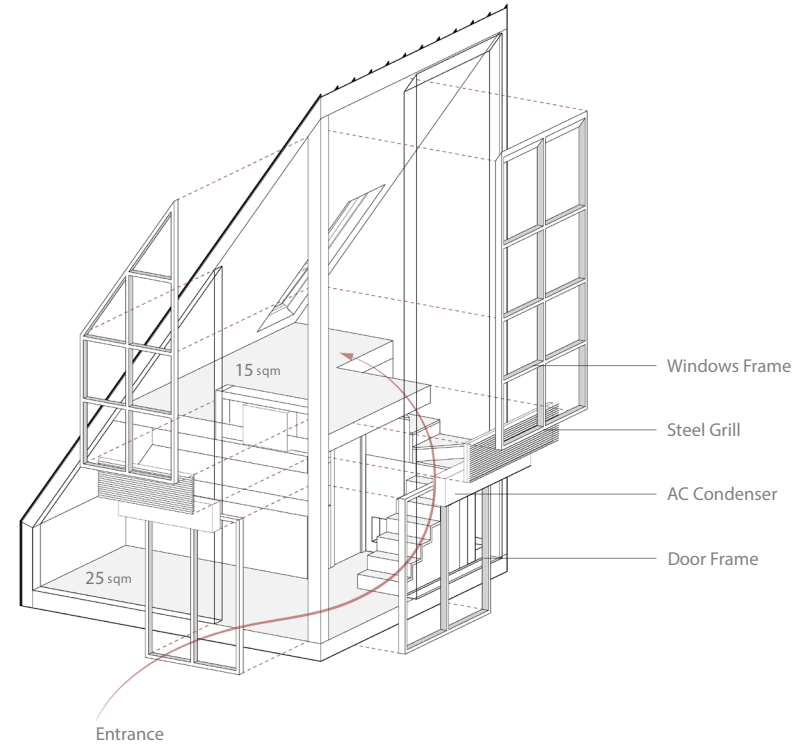
Kooch is the smallest product of MANA geshlaghs. This product had been designed and developed for small scale residential demand and is also for humid and mild weather conditions.

**Kooch**  
Small





- ① Entrance
- ② Living room
- ③ Kitchen
- ④ Bathroom
- ⑤ Bedroom





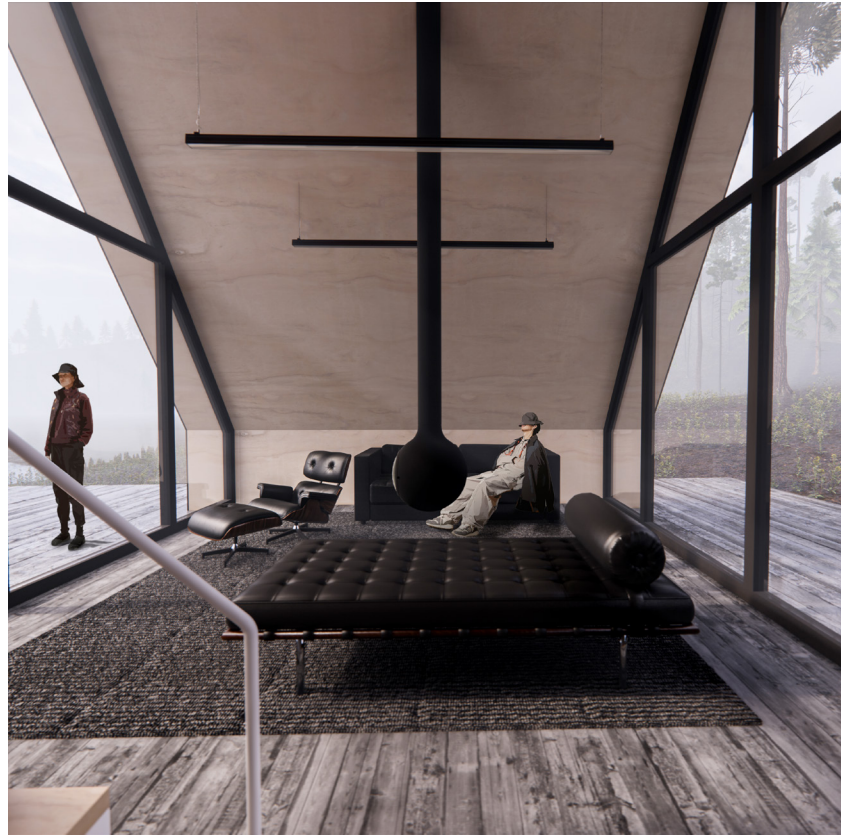
The Medium Kooch product is an alternative example of the Kooch-S structure to achieve a larger scale footprint through its expansion.

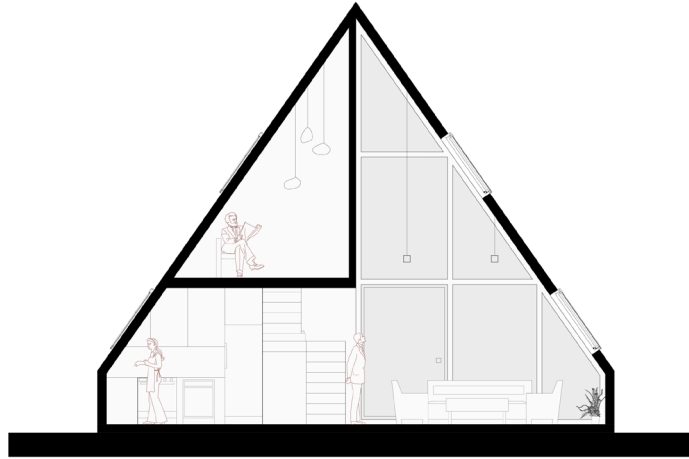
This product includes alternative materials (interior and exterior) to reach the best solution based on the client brief.

## **Kooch**

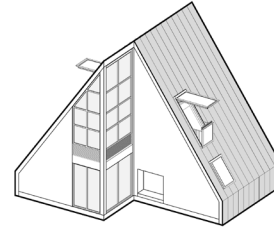
**Medium**

One of the most important features of this product is the preservation of the basic module characteristics and the expansion of the floor area at the same time.



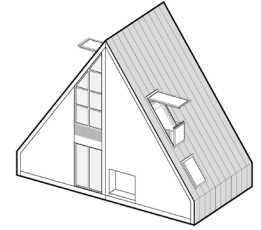


Medium Kooch Section

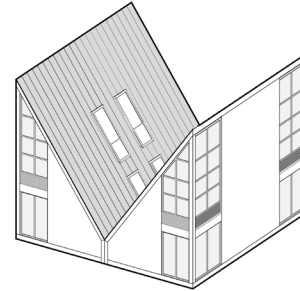


Medium Formation (two Units)

80 sqm

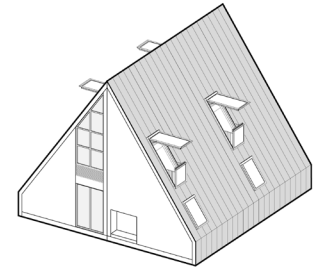


Medium Formation (two Units)



Large Formation (Four Units)

160 sqm



Large Formation (Four Units)



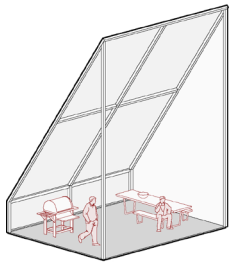
## Sai

Sai product is an accessory in Mana Gheslachs category. The formation process of this product was designed to organize the negative spaces.

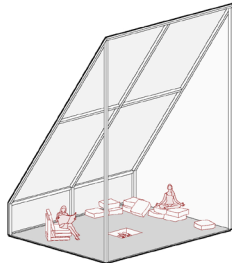
The main idea is the emergence of space envelopes and light roofs for combination and flexibility and in the end result, is compatible with mana products and in function meets the diverse needs of users.



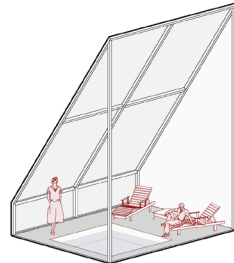




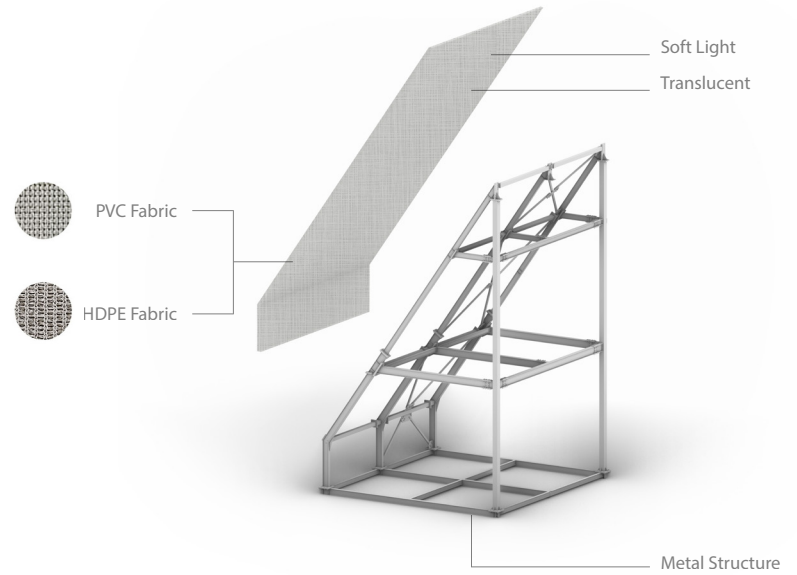
More Space For Gatherings

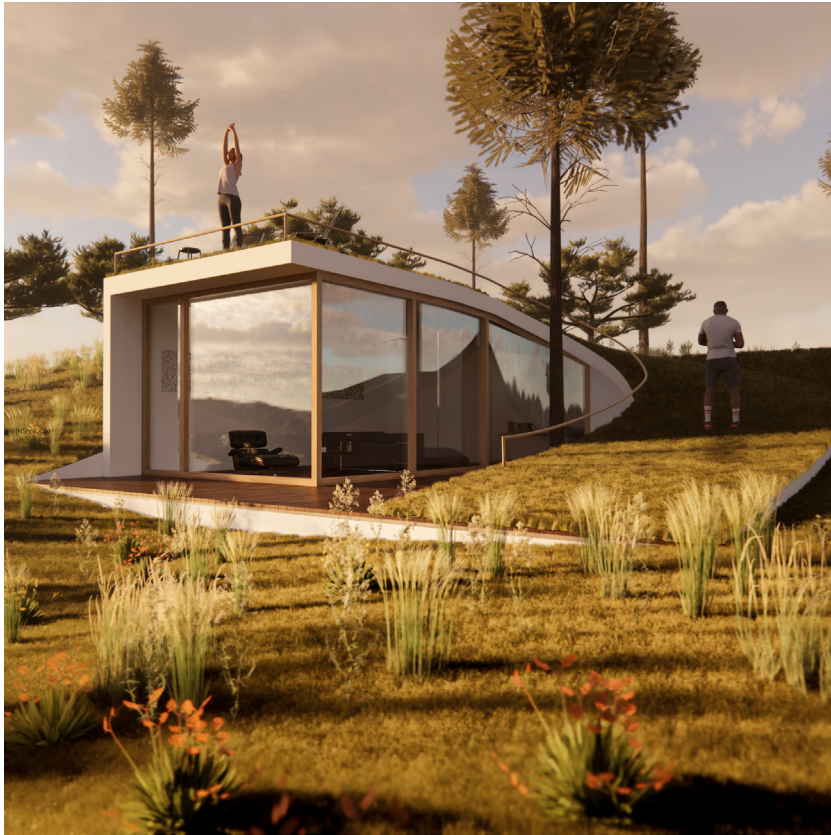


A Rich Outdoor Experience



Remarkable Level of Privacy

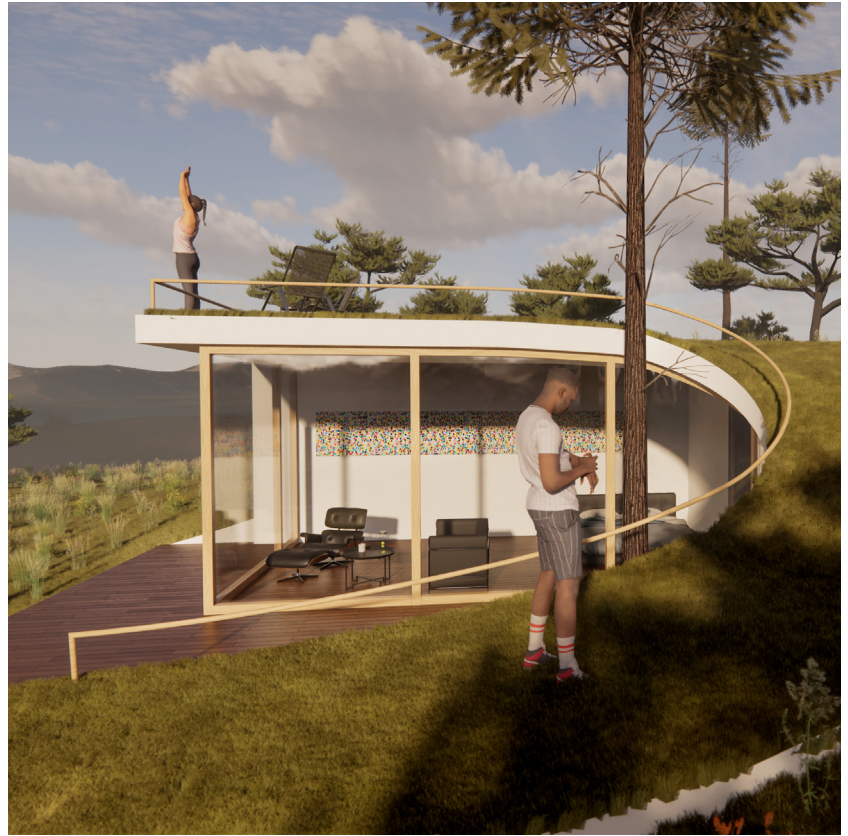


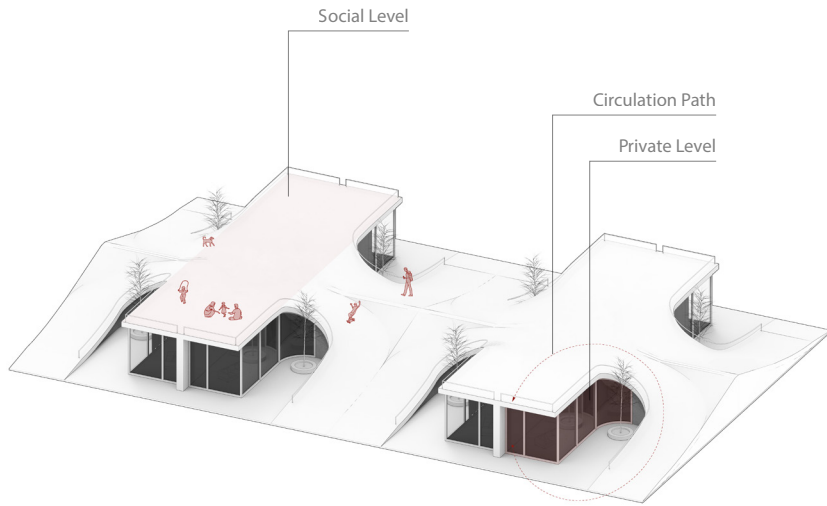


## Hive

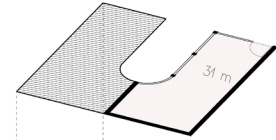
The most important feature of Hive is its relation to nature and its natural form. The main concept of this product includes excavation in the project site and burying of the prefabricated module in the heart of the landscape.

The paradoxical definition of inside, outside and the space in between which are connected with a visual access towards all of this states of spaces could be recognized as the main features of this product.

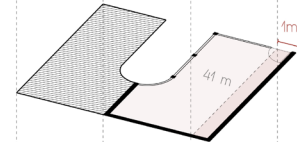




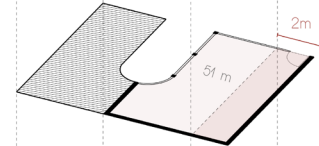
Single Room For 1



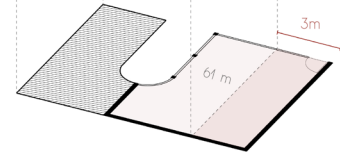
Single Room For 2



Double Room For 3



Double Room For 4



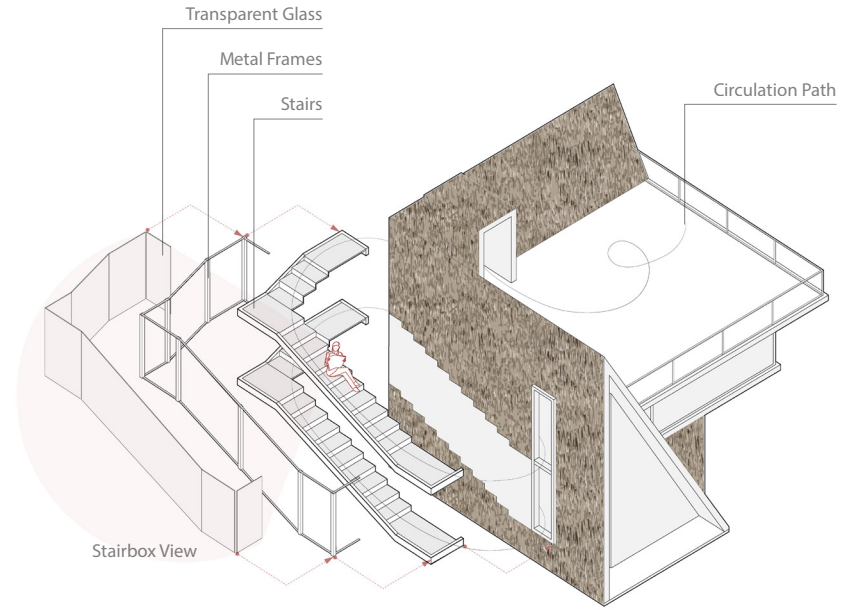


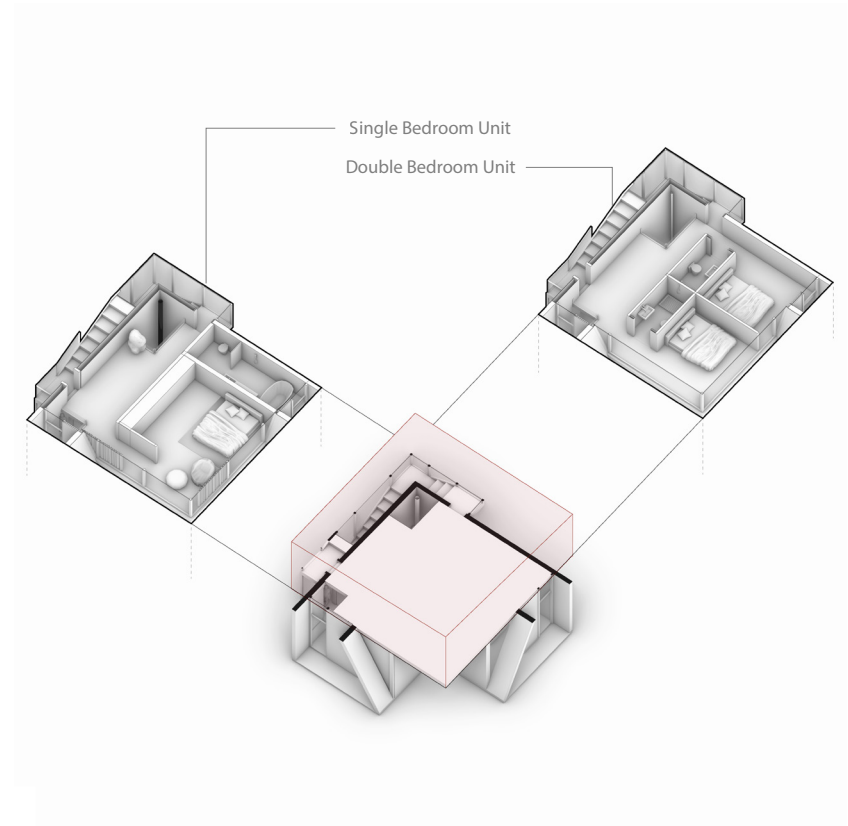
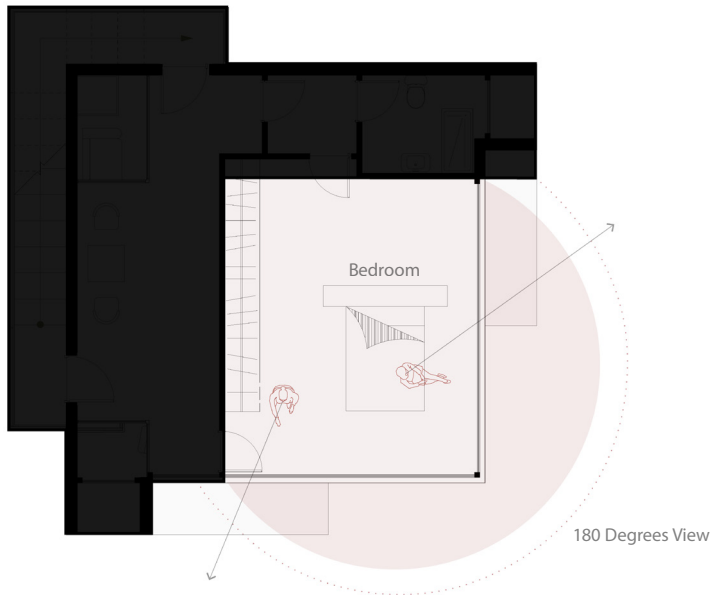
**V**

V is an A-Frame based product which had been developed based on the heritage of Gilan province architecture for humid and mild weather conditions.

The materiality of this product includes Kanduj (rice stem) prefabricated panels in consonant with the Gilan rural heritage aesthetics.

This product consists of a master bedroom with a 180 degree opening, which captures the most optimum view of the environment.







## LWS

Light Weight Structures (LWS) are light pre-engineered structures with variety of functions. The important feature of this products category the is lightness of overall structure and flexibility of their programs.

Milli	45
Ako	51
Room no.03	57





## Milli

250\*240\*240 cm

Milli is a small-scale architectural product that is designed with an open program approach for flexible operation and placement in various urban and built environment scenarios.

Milli is designed and engineered with a lightweight metal structure and PVC cushion as the finishing surface, to provide a minimal and translucent architecture with minimum space consumption.





Fast Food Kiosk



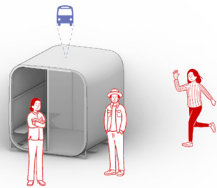
Small Shop



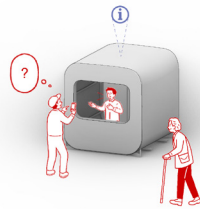
Ice-Cream Kiosk



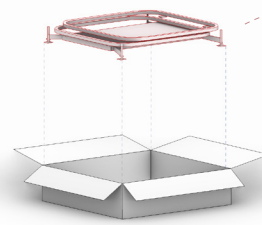
Flower Shop



Bus Stop

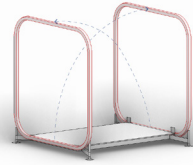


Information Kiosk

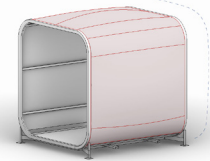


①

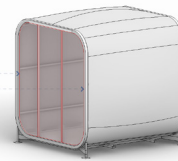
②



③



④





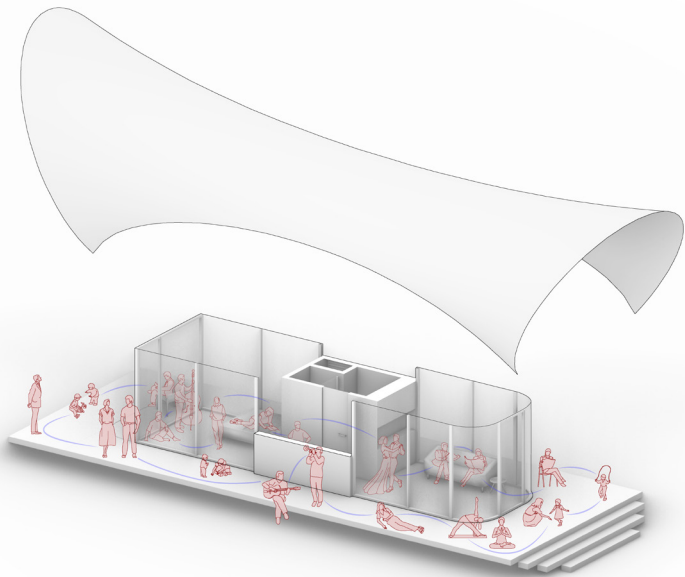
## Ako

1200\*300\*280 cm

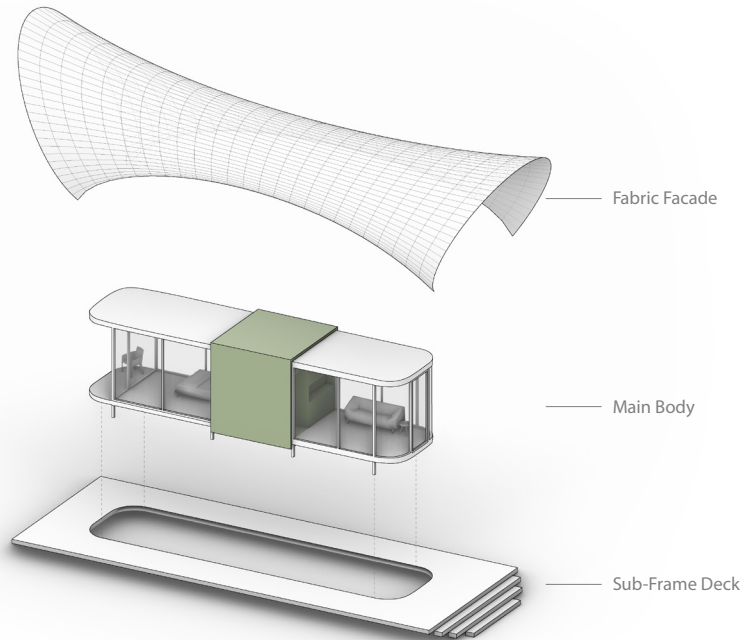
Ako is a prefabricated residential capsule with a double-skin facade, which is created through a fabric sheath on the roof and facade, controls the temperature, provides shading, and creates a sense of privacy while maintaining a 360-degree view in the interior space.

Ako's modular transparent surfaces have the ability of transformation into modular solid surfaces (Dry wall structure) based on the client demand and order.





Ako provides a potential platform for a variety of social interactions.





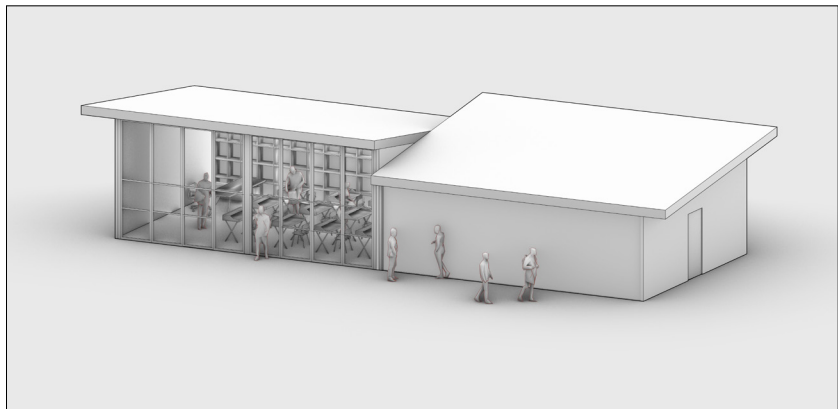
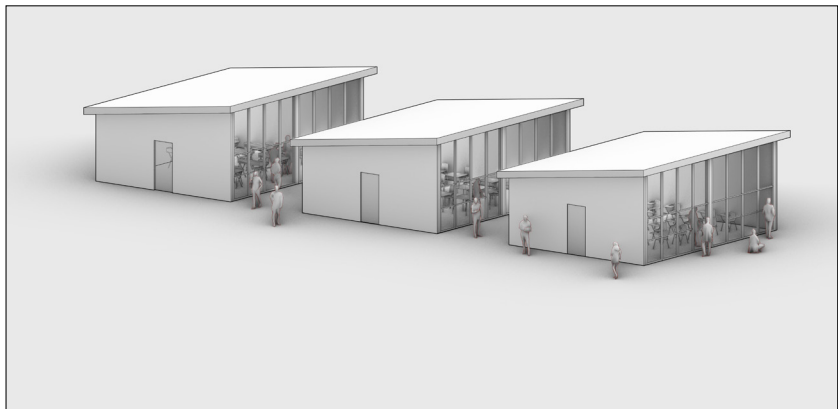
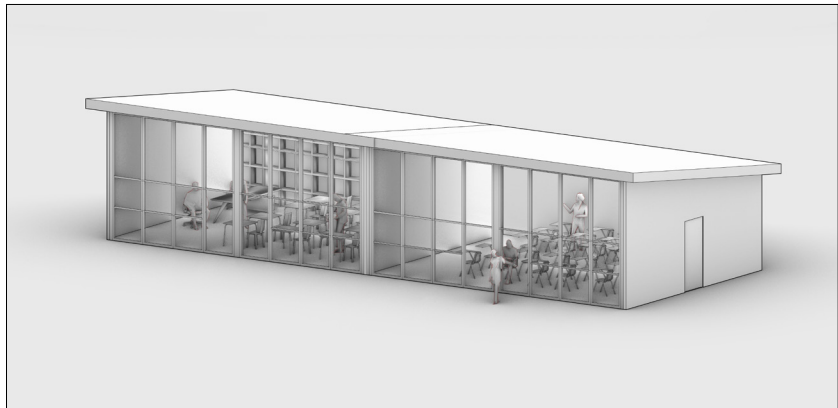
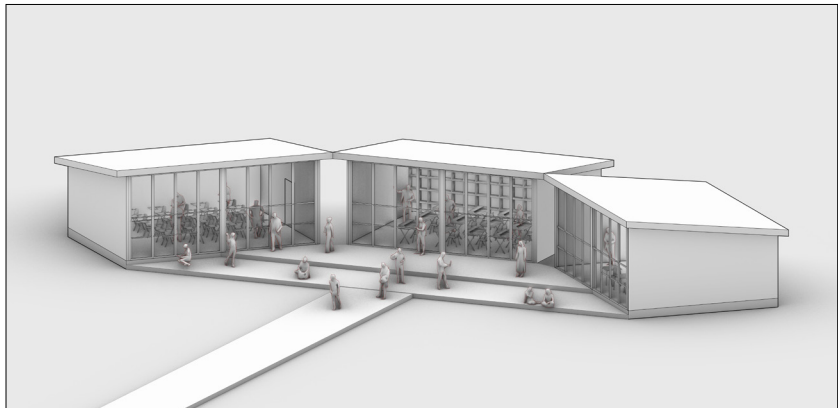
Room no.03 is a single product designed and engineered with steel frames structure, sandwich panel exterior finishing and dry wall in the interior, which could be used as single unit or rather combination of several pieces.

## Room no.03

Room no.03 is a flexible structure in terms of its program and function, instantiating; it could function as a classroom, gym, office, residential space and so on.









## Container

Mana container products include re-used structures of transportation containers. These products are designed and engineered compatible with urban and temporary development due to their mobility and user attraction.

Cafe Containers	65
CCS01	67
CCL01	71
CCL02	77
CCL03	83
Office Containers	89
CCL04	91
CCL05	97
CCXL01	101
CCXL02	107
CCXL03	113





## CCS01

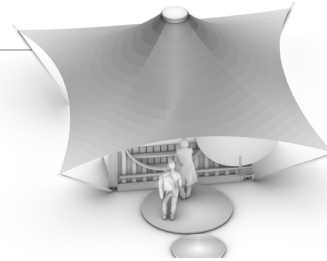
10 ft

One of the prominent features of this product is the desirable dimensions for placement in dense urban environments and areas with limited space. In CCS01, due to the small size and importance of the interior space, considerations have been taken into account for optimizing performance.

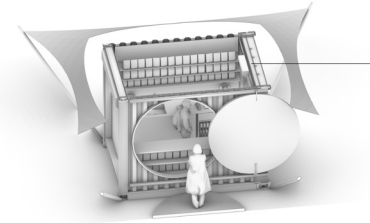
The interior space structure consists of wiring and desirable cabinets to maximize the positive space. This category of mana products is a suitable option for use as small and temporary branches.



- Tensile structure 6\*6
- Shading in warm seasons
- Shelter in rainy seasons
- Prevent direct radiation on the body of the container



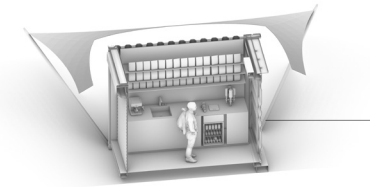
- Opening space with 2m diameter
- The opening is moved by rail
- The coffee delivery space itself is a circle
- of light within a solid mass



- All products are visible in the drop-down circle
- Product placement stands
- Flexible Structure



- Work table
- Grinder
- 3 ft refrigerator
- Sink
- Espresso Machine





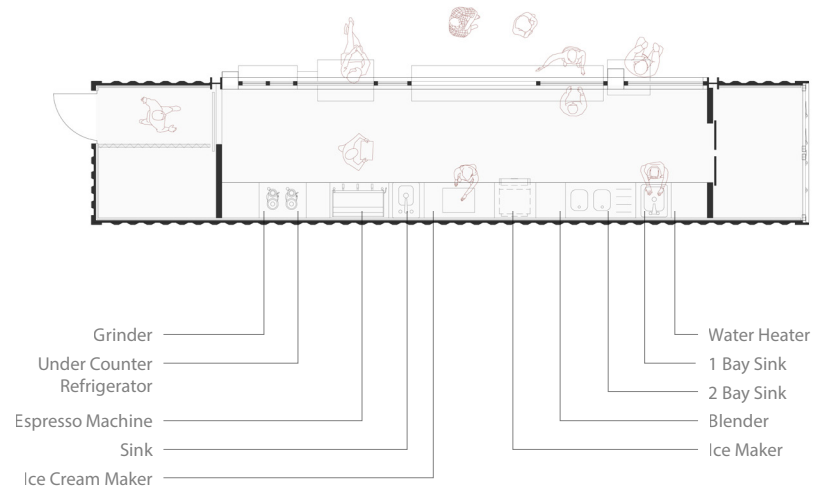
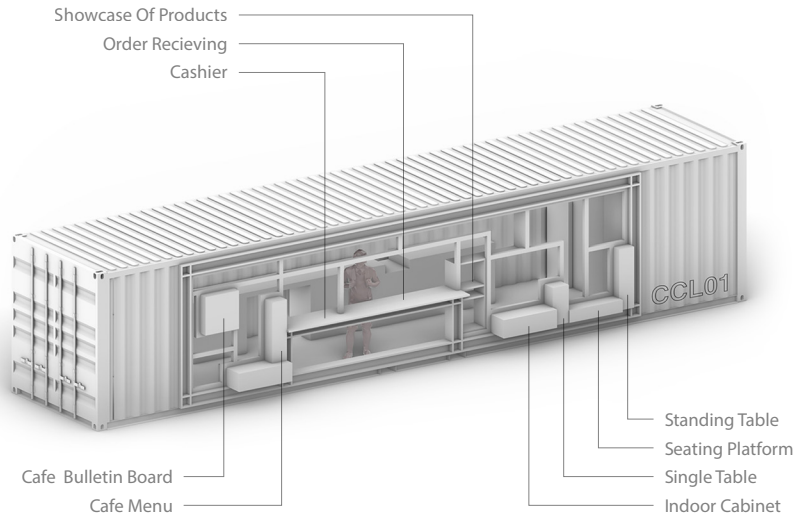
Based on this approach, the showcase and the space for presenting by-products such as ready-made coffees and special packages of each café are embedded in a transparent wall and exposed to public attention.

**CCL01**

40 ft

A noteworthy feature of this product is the way it interacts and redefines the customer-café relationship in urban space. In the proposed scheme, the customer, plays a direct role in the formation of the process, following the discovery of functions. By considering the transparent shell, customers will be able to observe the process of preparation and delivery of the order.









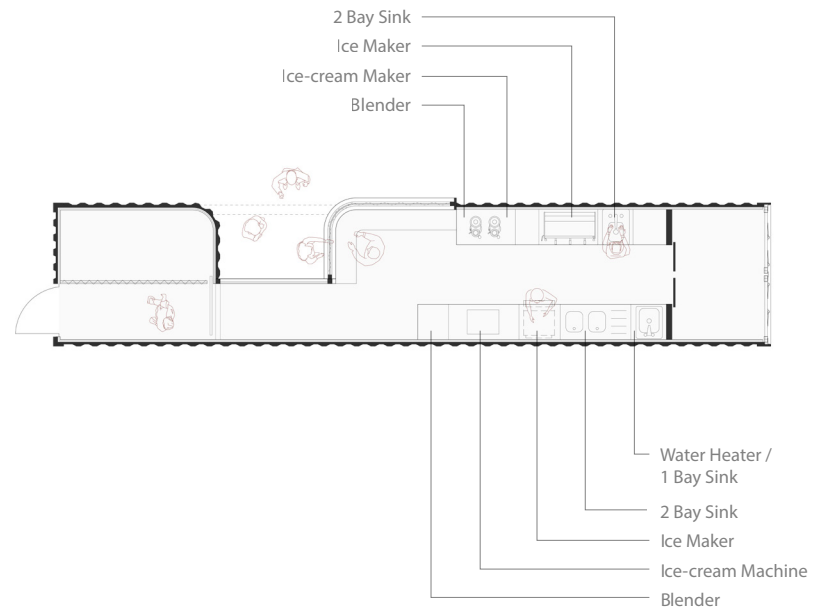
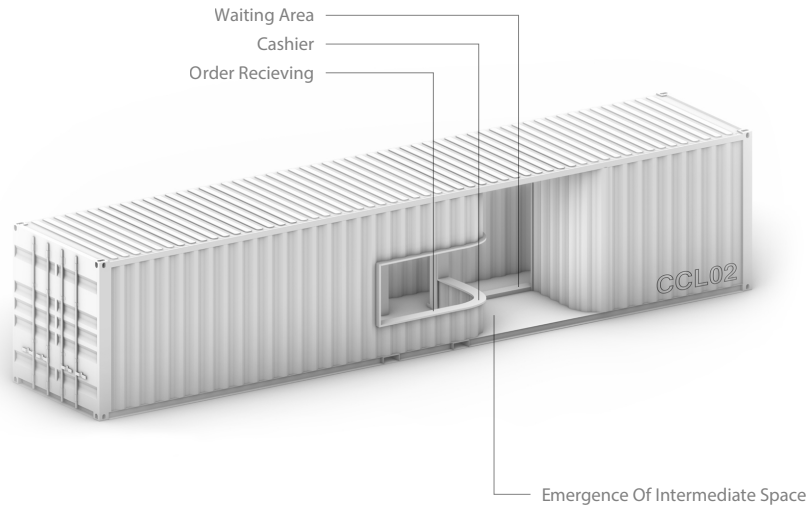
## CCL02

40 ft

This intermediate space has a paradoxical personality. Therefore, there is a place inside the café-container and at the same time outside of it.

One of the distinctive features of this product is the creation of a unique spatial form and structure by taking advantage of the bending capability and the integration of external and internal space. The body of the counter is distorted in order to define the border between inside and outside, and service space is formed in an intermediate space.







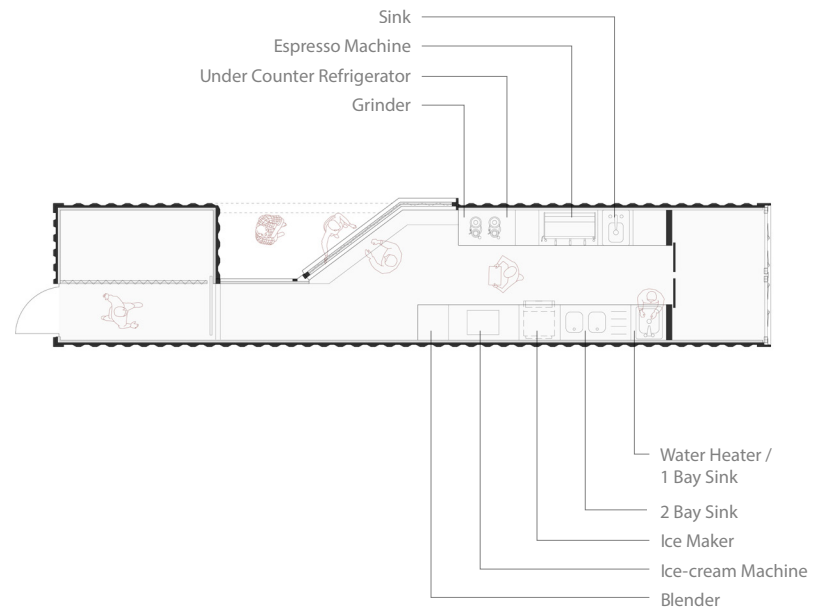
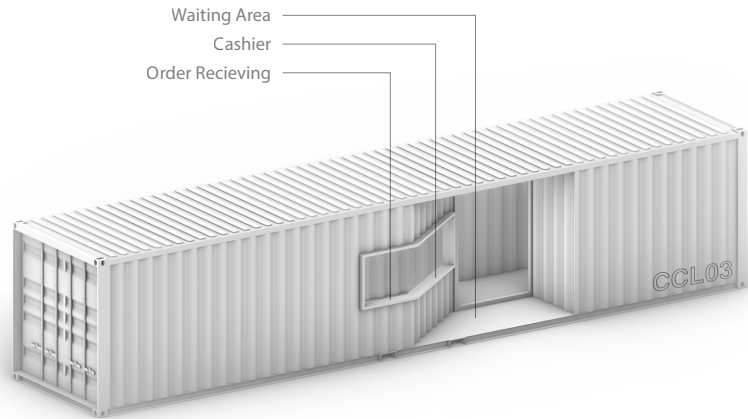
## CCL03

40 ft

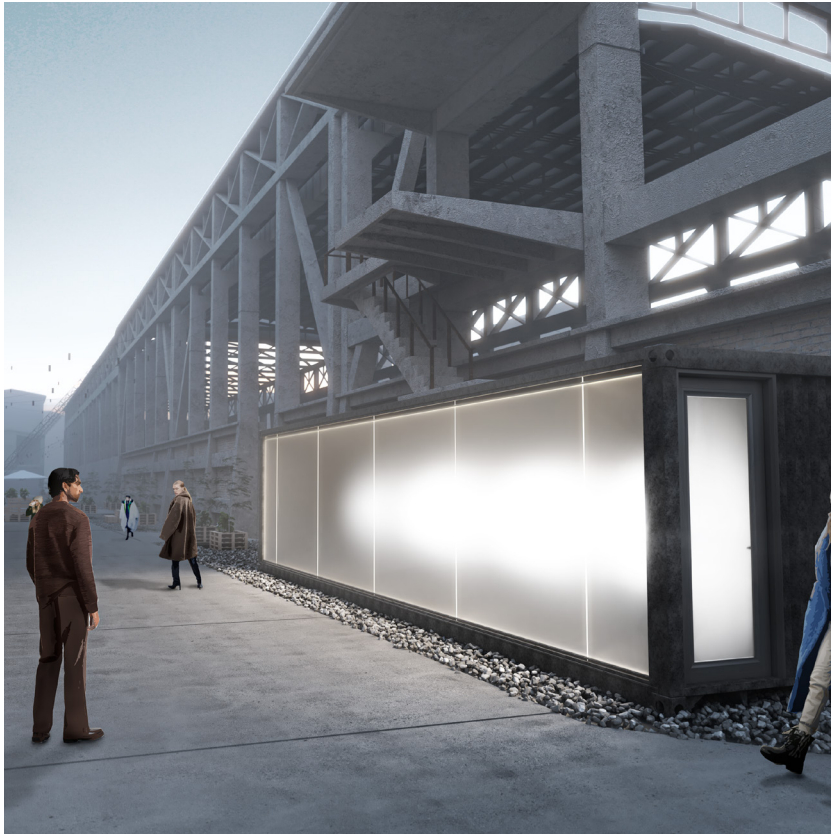
The notable features of this product are the method of defining the material and emphasizing the internal and external borders due to the contrast of used materials. The way the audience interacts with the café-container becomes the central idea of the design, and the nature of the container as an industrial and rigid object is questioned.

The proposed design provides a precise spatial structure and uses the facilities and tools of design and architecture to create an alternative and novel space.









## **CCL04**

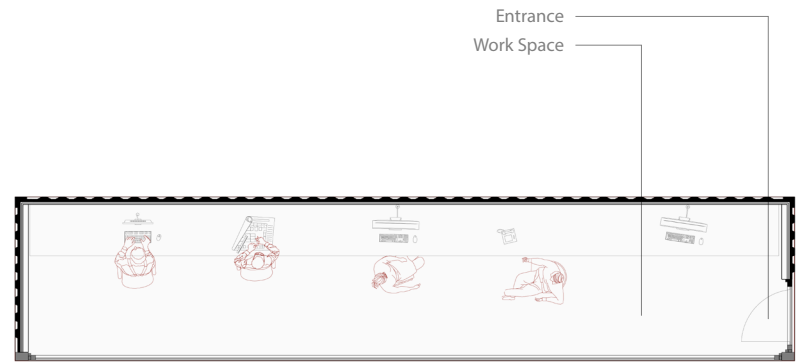
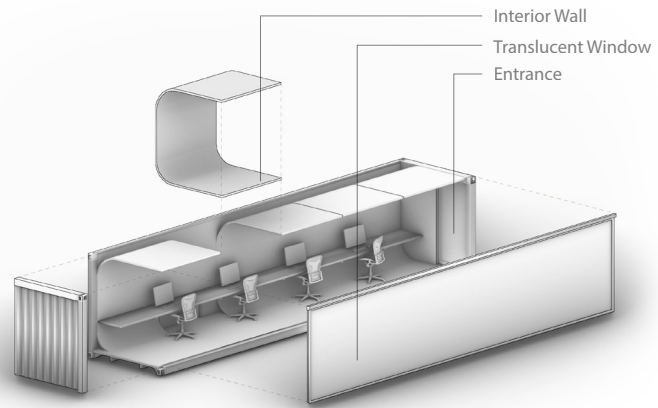
40ft

CCL04 is among the remarkable MANA Office Containers due its unique interior design and exterior form. This product consists of a translucent surface on its exterior form and a curvature interior in the inner structure which proposes a qualitative sense of space in the function of an office.

This product is a considerable choice for mobile and temporary expansion based on demand







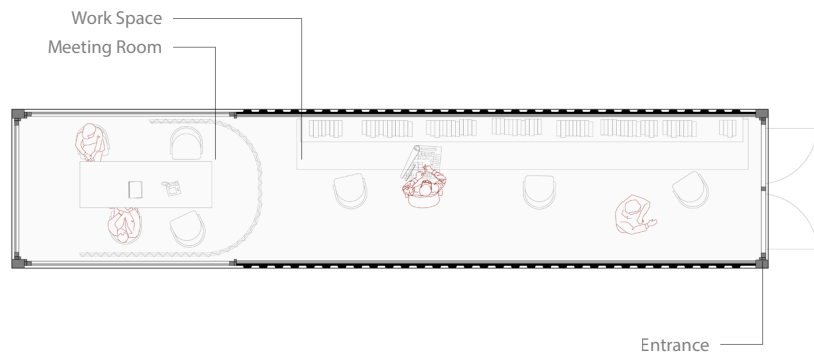
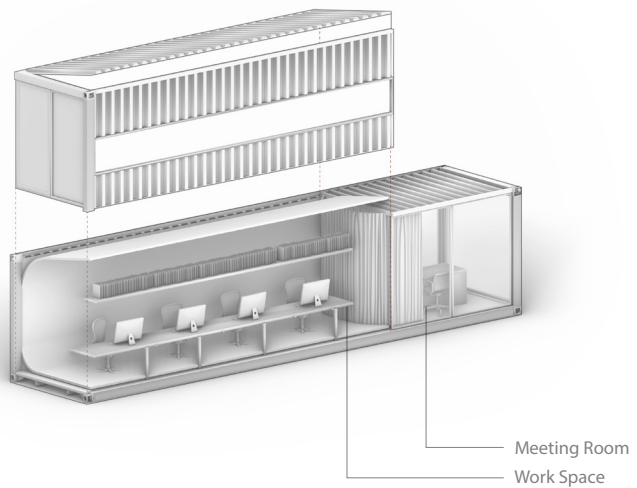


## CCL05

40 ft

CCL05 is a flexible product, suitable for small corporation development which includes work space and meeting room (small scale meeting room suitable for up to 5 person) in an integrated internal structure.

This product is shaped based on an exterior opening to the outside environment and transparent surfaces which could be covered with curtains in the meeting room.



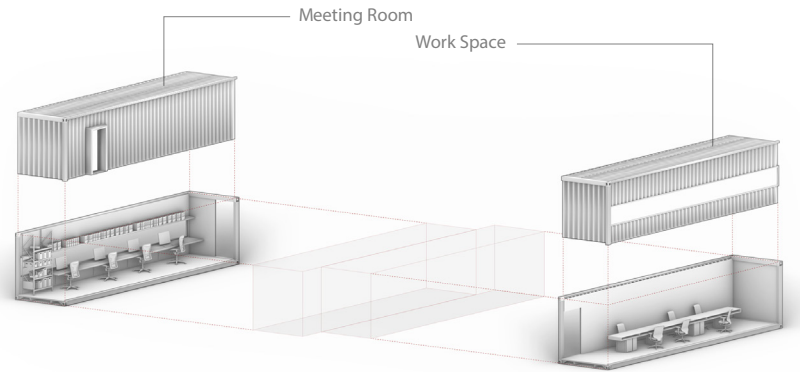


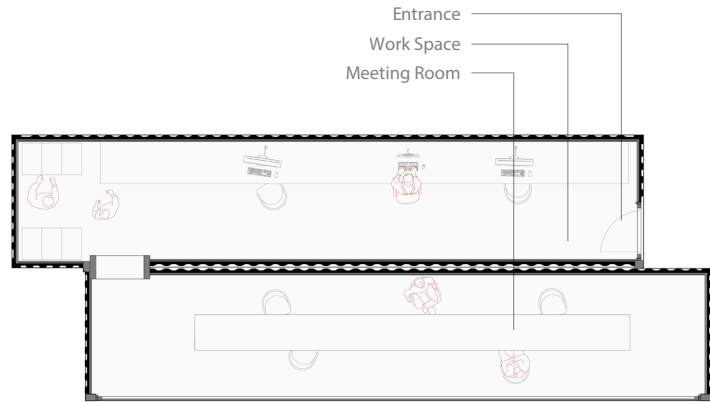
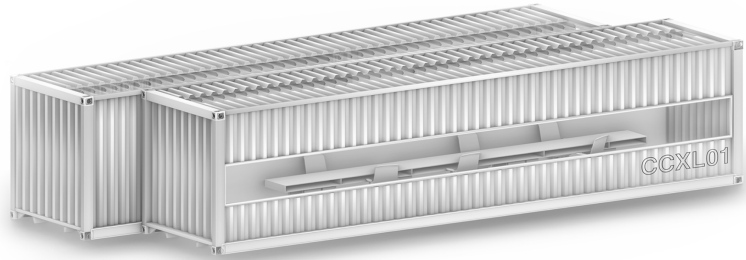
## CCXL01

40 ft \* 2

CCXL01 is among the large scale MANA Office containers. These products are shaped based on the attachment of two large containers (40ft) which results in large and flexible office spaces.

Based on the larger scale of this product, the spatial structure would be more complex and possibilities of spaces vary based on the demand. This product is a considerable option for large scale development of different brands and companies.







## CCXL02

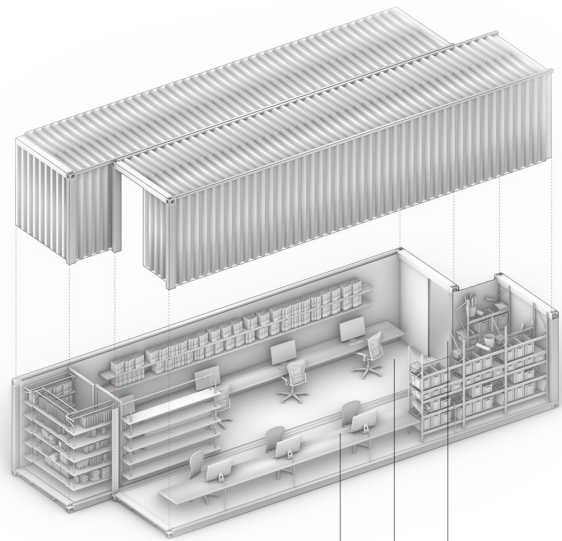
40 ft \* 2

CCXL02 consists of two large containers merging in a single space area. These two large containers are attached by removing an envelope of each in order to achieve an integrated large interior space for complicated Office-based uses.

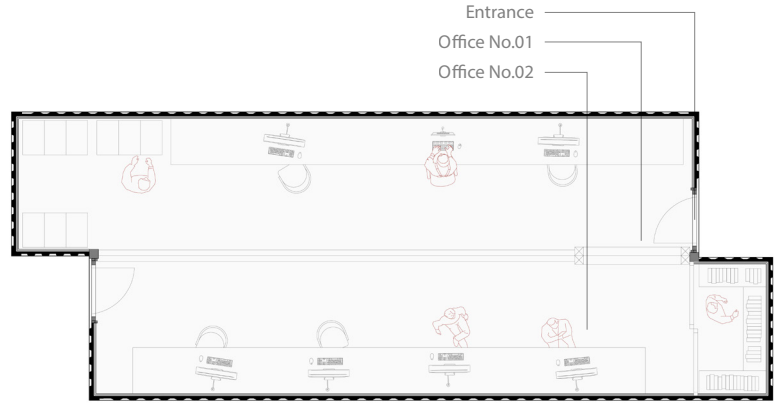
For that matter, both large containers had been designed to serve as separate integrated offices, with shelves, storage space and flexible interior arrangements.







Office No.02  
Office No.01  
Entrance



Entrance  
Office No.01  
Office No.02



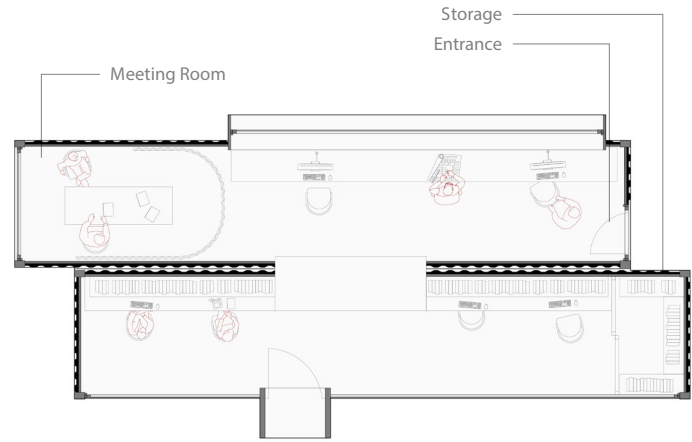
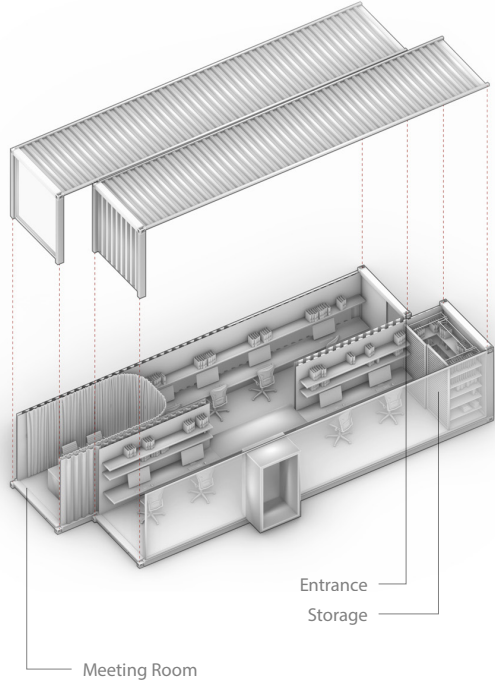
## CCXL03

40 ft \* 2

This product consists of two large containers and includes a reflective envelop on one side and a solid envelop on the opposite.

The interior structure of this product includes work space, small meeting room, storage, office shelves and a small common table in the center of the space which could be used as coffee table between the colleagues.







W

## White Tents

White Tents are mobile tensile structures which had been designed and engineered with a contemporary and technical approach. This category of Mana products is a developed form of nomadic and tribal architecture in the Middle Eastern regions.

Badban

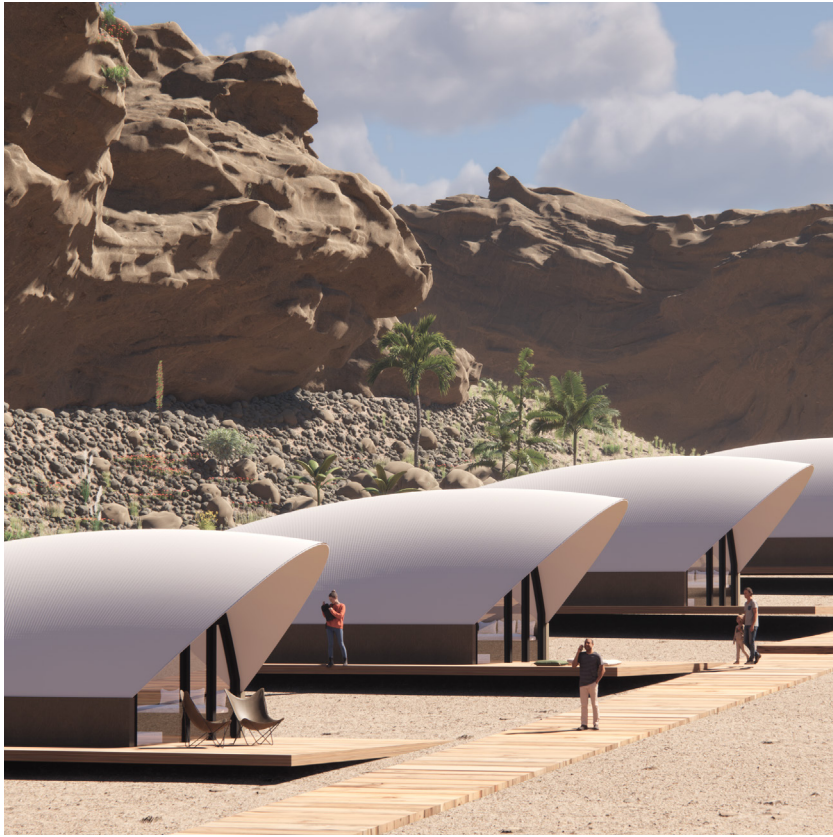
121



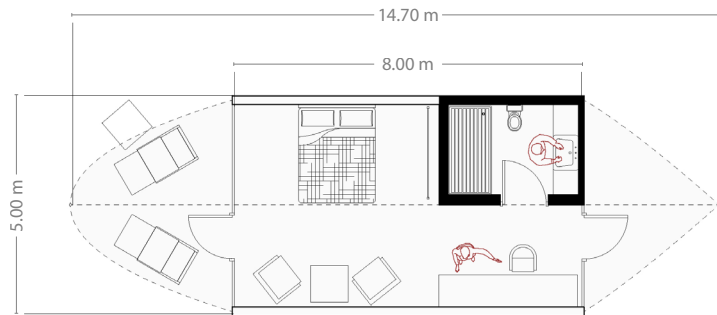
## Badban

Badban is one of the white tent products of Mana, which is designed and engineered with tensile structures and fabric as the main exterior material. The most important features of this product, are the mobility, lightness, and compatibility with the nomadic and desert architectural structure in the Middle East, with a contemporary approach.

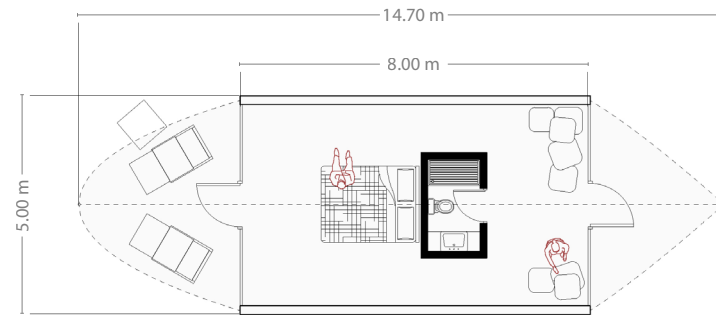
Badban with its unique aesthetic structure and flexibility in operation, is a suitable option for the development of tourism and various functions.







Badban Plan - alt 01



Badban Plan - alt 02



[www.mana.archi](http://www.mana.archi)  
+989307484348